



DR8 & DR8S HOSE REEL

INSTALLATION AND MAINTENANCE MANUAL



**PLEASE DO NOT THROW AWAY AFTER INSTALLATION
SAVE AND DISPLAY PROMINENTLY WHERE THIS
EQUIPMENT IS USED.**

Contents

DR8 Technical Drawing 1

Installation of Inlet Hose 2

Installation of Outlet Hose 3

Spring Tension Adjustment 4

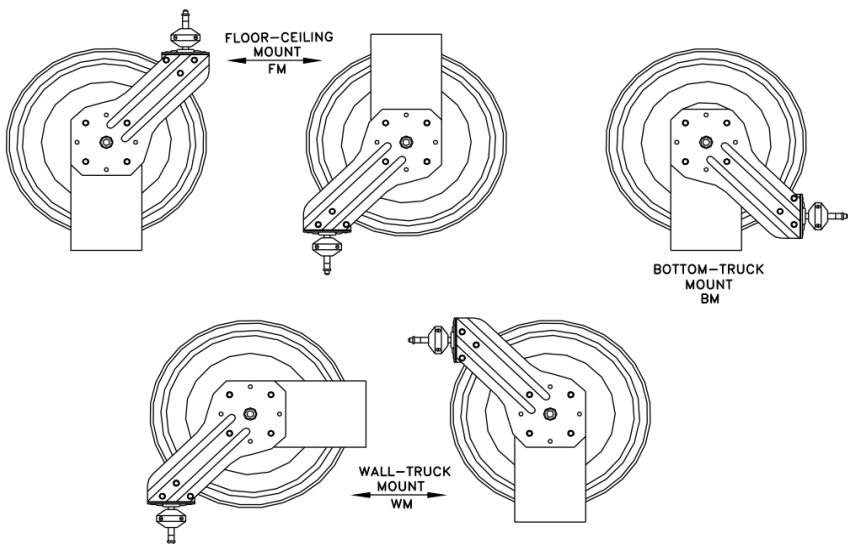
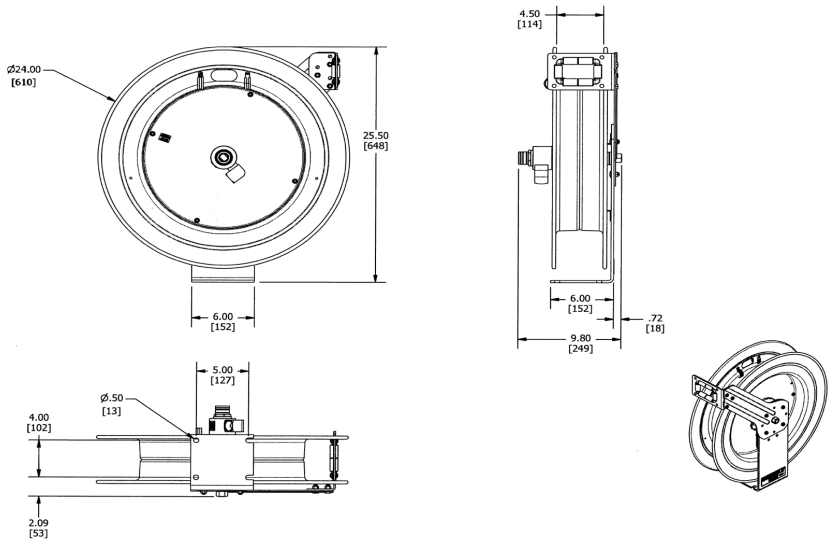
Swivel Seal Replacement 4

Spring Canister Replacement 5

Troubleshooting 6-7



DR8 Technical Drawing



Installation of Inlet Hose

1. Apply thread sealant to inlet hose and connect to the swivel joint on reel.

CAUTION: IT IS IMPORTANT TO USE A “FLEXIBLE” INLET HOSE. DO NOT USE SOLID PIPING OR RESTRAIN INLET HOSE AS TO CAUSE ANY SIDE FORCE ON SWIVEL JOINT. THE WARRANTY IS VOID IF NOT PROPERLY INSTALLED.

2. Flush some product through the system before connecting inlet hose to the source.
3. Install inlet hose into swivel assembly by hand tightening, followed by $\frac{1}{2}$ turn with wrench. DO NOT over tighten as it may damage swivel.
4. If reel includes hose (Otherwise, See Installation of Hose), flush some product through system before connecting end fitting, nozzle, or tool.
5. (Reel supplied less hose) Apply thread sealant to outlet hose fitting. Connect end, nozzle, or tool as desired.
6. If a hose stopper adjustment is required to allow easy reach of end fitting or tool; latch reel at approximate desired location, loosen (two) ball stop bolts. Move ball stop and tighten bolts. Unlatch reel.
7. Connect Inlet hose to supply source.

Installation of Outlet Hose

NOTE: Before proceeding, ensure that you are installing the proper size, length and type of hose per the reel rating. Consult factory if unsure of rating. Damage may occur if wrong hose is installed. Apply thread sealant to inlet hose and connect to the swivel joint on reel.

1. Securely stabilize the reel.
2. Wind the reel drum clockwise (facing the swivel) until the spring is tight.

Use Extreme Caution!

3. Back off approximately two turns and lock the reel drum to keep from rotating.
4. Insert the MALE fitted end of the hose through the roller guide arm and through the cutout in the side of the drum flange.
5. The MALE hose fitting should now be on the outside of the drum. Apply thread sealant, connect hose fitting to the swivel joint and secure the hose rigid with the (two) hose clamps.

NOTE: The hose clamps restrain the hose when fully extended, preventing strain between the fittings and swivel joint.

6. **CAREFULLY** release the locking ratchet and **SLOWLY** allow the hose to retract onto the reel.

Spring Tension Adjustment

1. Release line pressure prior to making spring adjustments.
2. Disconnect inlet hose.
3. Pull out approximately 6 feet (2m) of hose and latch the drum.
4. Add or subtract one wrap of hose as desired to acquire the proper tension on the reel.

NOTE: Spring tension adjustment is accomplished around the drum (to increase tension) or subtracting tension).

CAUTION: Improper tensioning of spring or adding too many pre-wraps may cause damage to spring mechanism. Only authorized personnel should make adjustments.

5. Unlatch drum and check for proper tension.
6. Connect Inlet hose.

Swivel Seal Replacement

1. Remove inlet hose from swivel.
2. Remove swivel from reel by unscrewing swivel from the axle shaft. Disconnect hose from swivel.
3. Remove retaining ring on swivel; pull out shaft from body.
4. Replace the seals, lubricate and reassemble swivel.
5. Fit hose to swivel then fit swivel to reel. **Do not over-tighten.**
6. Reconnect inlet hose and test for leakage.

Spring Canister Replacement

1. Pull out approximately 3 feet (1m) of hose and latch the reel.
2. Remove outlet nozzle, gun or tool and hose stopper.
3. Carefully unlatch the reel and **firmly hold the drum**. Allow the drum to **slowly** unwind until it stops.
4. Remove the outboard support arms, retaining ring, space and swivel unit.
5. Remove the two or four nuts located on the support post side inside the drum cavity. **Do not** attempt to remove the spring canister nuts.
6. Pull spring canister off drum and axle shaft.
7. Reverse above procedure to re-assemble.
8. Re-tension the reel by turning the drum three complete turns clockwise (from swivel side) and latch the drum.
9. Feed the hose through the hose guide. Fit hose stopper, then unlatch the drum. Hose stopper should sit snugly against the hose guide.

CAUTION: Release line pressure prior to making any repairs or adjustments to the reel.

Troubleshooting

Hose will not fully retract

Cause

- A. Outlet nozzle, gun, or tool is too heavy
- B. Spring is fatigued
- C. Field installed hose is too long

Remedy

- A. Add spring tension. See “Spring Tension Adjustment” on page ...
- B. Add spring tension. See “Spring Tension Adjustment” on page ...
- C. Call local Distributor for correct specified hose length.

Hose will not retract at all

Cause

Spring has lost all tension or possibly broken

Remedy

- A. Reinstall Spring Tension
- B. Replace Spring Canister. See “Spring Canister Replacement” on page ...

Reel will not latch

Cause

- A. Incorrect operation
- B. Dog spring or locking cam is broken or worn

Remedy

- A. Reel latches on first, second, third, or fourth “click”. After forth “click” it automatically rewinds
- B. Replace dog spring or locking cam

Continued

Troubleshooting

Fluid leaks from swivel

Cause

- A. Swivel seals are damaged or worn
- B. Inlet hose is not flexible

Remedy

Replace swivel seals. See “Swivel Seal Replacement” on page ...

Caution: Be sure leak is not at Hose Fitting!

Hose locks up when fully extended

Cause

Hose clamp is in the incorrect position

Remedy

Relocate hose clamp to optional location

Swivel assembly is not moving freely or locking up

Cause

- A. Inlet hose fitting has been over-tightened
- B. Inlet hose is not flexible causing side force on swivel

Remedy

Remove and examine swivel assembly for damage. Replace as necessary.

Properly tighten inlet hose. Hand tighten fitting, plus ½ turn with wrench.



Environmentally Exceptional Washdown Products

WORLDWIDE HEADQUARTERS

SuperKlean Washdown Products
1 Edwards Court, Suite 101
Burlingame, CA 94010

EMAIL

sales@superklean.com

DIRECT

(800)769-9173
(650)375-7001

TECHNICAL SUPPORT

(650)375-7001

SHIPPING/LOGISTIC SUPPORT

(650)375-7001

BUSINESS HOURS

8am-5pm Monday-Friday PST

